

Peter Ilyich Tchaikovsky  
Francesca da Rimini, Op. 32

**Trombone Tenore 1.**

**Andante lugubre.**

Musical notation for the first section of the Trombone Tenore 1 part, marked "Andante lugubre". The music is in 3/8 time and consists of two staves. The first staff begins with a piano (*p*) dynamic and features a melodic line with slurs and accents. The second staff continues the melody, with dynamics ranging from piano (*p*) to mezzo-forte (*mf*). The section concludes with a first ending bracket.

**Piu mosso. Moderato.**

Musical notation for the second section of the Trombone Tenore 1 part, marked "Piu mosso. Moderato". The music is in 3/8 time and consists of two staves. The first staff begins with a mezzo-forte (*mf*) dynamic and includes a first ending bracket labeled "12 A 4". The second staff continues the melody, with dynamics ranging from mezzo-forte (*mf*) to forte (*f*). A second ending bracket labeled "B 4" is present. The section concludes with a first ending bracket.

**Tempo I.**

Musical notation for the third section of the Trombone Tenore 1 part, marked "Tempo I". The music is in 3/8 time and consists of one staff. It begins with a forte (*f*) dynamic and includes a first ending bracket labeled "2 2". The section concludes with a first ending bracket labeled "2 2" and a *pp* *ritenuto.* marking.

**Allegro vivo.**

Musical notation for the fourth section of the Trombone Tenore 1 part, marked "Allegro vivo". The music is in 3/8 time and consists of five staves. The first staff begins with a pianissimo (*pp*) dynamic and includes a first ending bracket labeled "2" and a second ending bracket labeled "1". The second staff continues the melody, with dynamics ranging from pianissimo (*pp*) to fortissimo (*fff*). The third staff includes a first ending bracket labeled "32 C 32 D" and a second ending bracket labeled "6". The fourth staff includes a first ending bracket labeled "4" and a second ending bracket labeled "1". The fifth staff includes a first ending bracket labeled "1 E". The section concludes with a first ending bracket labeled "1".

Tchaikovsky — Francesca da Rimini

The Orchestra Musician's  
CD-ROM LIBRARY™

2

**Trombone Tenore 1.**

**G 31** **H 13** **J** **K** **L** **M** **N** **O** **P** **Q** **R** **S** **T**

*ff* *sf* *f* *mf* *p* *riten.*

**Andante cantabile non troppo.**

**Listesso tempo.**

**N 20** **O 26** **P 23** **Q 6** **R Tromb Basso**

**Trombone Tenore 1.**

**Allegro vivace.**

**Allegro vivo.**

**Poco piu mosso.**

Peter Ilyich Tchaikovsky  
Francesca da Rimini, Op. 32

**Trombone Tenore 2**

**Andante lugubre.**

Musical notation for the first section of the Trombone Tenore 2 part, marked "Andante lugubre." The notation is in 3/8 time and consists of two staves. The first staff begins with a dynamic marking of *p* and features a first ending bracket. The second staff continues the melody with dynamic markings of *mf*, *p*, *p*, and *mf*, and includes a second ending bracket.

**Piu mosso. Moderato.**

Musical notation for the second section of the Trombone Tenore 2 part, marked "Piu mosso. Moderato." The notation is in 3/8 time and consists of three staves. The first staff starts with a dynamic marking of *mf* and includes a key signature change to A major (A4) and a measure rest of 12 measures. The second staff continues with a dynamic marking of *f* and includes a key signature change to B major (B4) and a *poco cresc.* marking. The third staff concludes the section with dynamic markings of *f*, *dim.*, *mf*, *pp*, and *riten.*, and includes two second ending brackets.

**Tempo I**

**Allegro vivo.**

Musical notation for the third section of the Trombone Tenore 2 part, marked "Tempo I" and "Allegro vivo." The notation is in 3/8 time and consists of four staves. The first staff begins with a dynamic marking of *pp* and includes a first ending bracket. The second staff continues with a dynamic marking of *fff* and includes a measure rest of 4 measures. The third staff continues with a dynamic marking of *fff* and includes a first ending bracket and a key signature change to E major (1E). The fourth staff concludes the section with a dynamic marking of *fff* and includes a measure rest of 6 measures and a key signature change to D major (32 C 32 D).

**Trombone Tenore 2**

**F**  
*ff*

**2 G 16**

*mf* **4** *f* *poco cresc.* **3**

**H 13** *ff* **J** *fff* **4** **1** **1**

**1** **1K**

*f* **2** *ff*

**L** *fff* **2**

**1** **1** **1** **M** **1** **8** **1**  
*f* *mf*

**29** **1** **35** **N 20 O 26**

*p* *riten* **12**  
**8**

**Andante cantabile non troppo.**

### Trombone Tenore 2

Listesso tempo.

20 P 23 Q 6 R

S

Allegro vivace.

1 3

Allegro vivo.

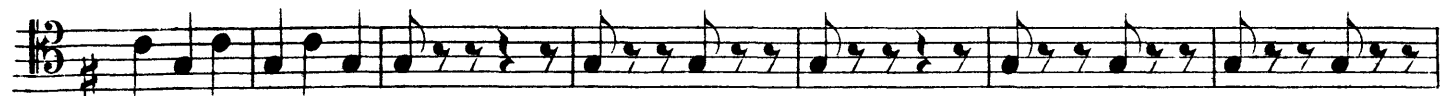
32 T 32 U

1 1 1 1X

**Trombone Tenore 2**



**Poco piu mosso.**



Peter Ilyich Tchaikovsky  
Francesca da Rimini, Op. 32

**Trombone Basso**

**Andante lugubre.**



**Piu mosso. Moderato.**



**Allegro vivo.**





**Trombone Basso**

mf *poco cresc* **ff**

**H 14** **3**

**1**

**1** **1** **1**

**f** **fff**

**6 L**

**2** **1** **1** **1** **1**

**Andante cantabile non troppo.**

**M** **1** **1** **43** **35** **N 20** **O 26**

**mf**

**12**  
**8**

**Listesso tempo.**

**20 P 23 Q 6 R**

**mf** **mf** **mf** **ff** **mf**

**S** **1**

**f** **3** **3** **3** **3**

**10**

### Trombone Basso

**Allegro vivace.**

1 3 *fff* *mf* *dim.* *p* *pp*

**Allegro vivo.**

32 T 32 U 4 *fff*

1 1

1 1X

6 Z *fff*

2

2 1 1 1 1 1

**Poco piu mosso.**

1 5 8 *f* *mf* *fff*

*fff*

1

Peter Ilyich Tchaikovsky  
Francesca da Rimini, Op. 32

**Tuba**

**Andante lugubre.**

7 tuba mf mf

**Piu mosso. Moderato.**

5 5 A 12 B 17 2 7 rit. #6 8

**Allegro vivo.**

2 27 C 32 D

1 fff

1 1 1

1 E 8 F1 fff

fff

2 G 32 H 20 fff

### Tuba

**J**  
*fff*

**1 1 1K**

**10 L**  
*fff*

**2**

**2 1 1 1**

**1 M 1 1 1**  
*f mf*

**Andante cantabile non troppo.**

**40 1 35 N 20 O 26**  
*riten*

**Listesso tempo.**

**20P 23Q 6R**

*ff*

**1**

**Tuba**

1

*fff*

10

**Allegro vivace.**

1 3 7

*ff* *fff*

#6  
8

**Allegro vivo.**

2 27 T 32 U

*pp* *ff*

4

*fff*

1 1

1 1X 10

Z 2

*fff*

2

**Tuba**

**Poco piu mosso.**